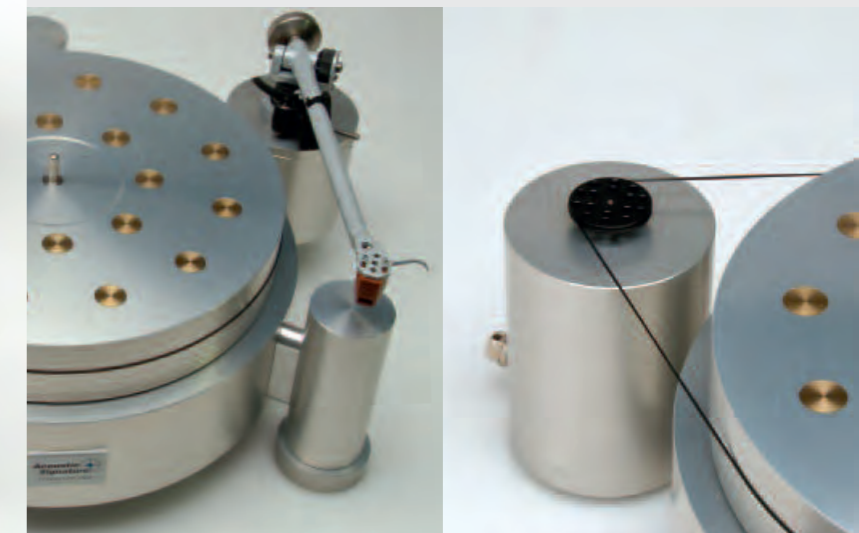
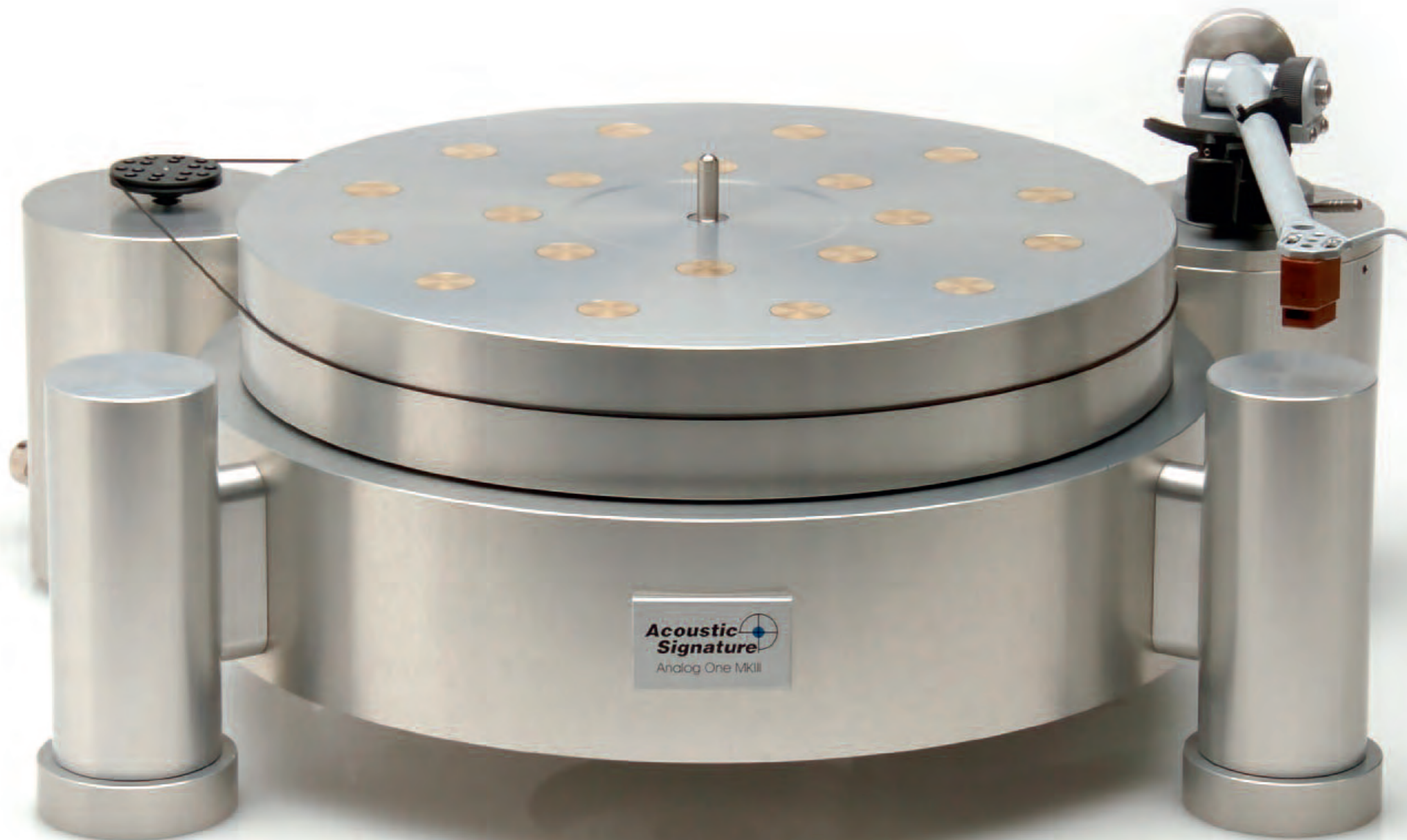


Analog One MKIII

For the Analog One MkIII, a 5 cm thick turntable platter made of aluminium, and a 8 cm solid aluminium chassis, which also carries all attachments, form the base of the turntable. With 3 adjustable feet the overall turntable can be adjusted. The platter is made of a very soft alloy to optimize its periodic resonance, and is coated on the rear side with resonance-reducing material. The bearing is the heart of any turntable. Complex research and development allowed us to invent a bearing which unites exact fit, lack of noise, low friction and long term stability. The platter axle consists of a hardened special steel, which is polished. At the end of the axle an extremely hard tungsten carbide ball is mounted. Perfectly matched to the divided bushes from sinter bronze are manufactured. They are aged, self-lubricating and therefore maintenance free. As bearing bottom we use the High Tech material TIDORFOLON. Our bearing runs dry - without oil. The external drive motor of the turntable is run by its own electronic control. The Alpha then uses the DC current and its own built in precision oscillator to produce a perfectly clean sine wave of 24V. This perfect output wave is then used to power the motor, resulting in a clean, steady spin. The Alpha is impervious to the negative effects household and computer appliances can have on a turntable drive. Fluctuations are reduced with this solution. The mass of the platter with its inertia is an integral part of the turntable concept. Least amount of bearing friction, complex drive control and large inertia guarantee perfect synchronization. The tonearm mounting plates are adjustable. The mounting of any desired tonearm will be possible, with a maximum of 3 tonearm mounting plates on one turntable. Highest precision and the manufacturing in Germany guarantee reliability and the perfect function of this turntable. To make sure that every Analog One MkIII is exactly the same we produce nearly every part on computer controlled CNC machines.



Technical Data

Drive System	1 Synchronmotor
Bearing	High Precision Tidorfolon Bearing
Chassis	80 mm Alu Chassis with 3 adjustable feet
Platter	Aluminium Platter 50 mm, 20 Silencers, 14 kg
Motorelectronic	electronically regulated, main decoupled Alpha Electronic
Dimension (WxDxH)	440 x 430 x 199 mm, 39-45 kg depending on options